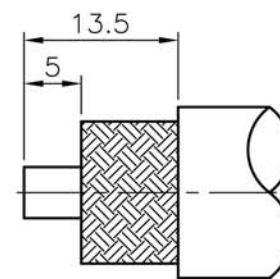
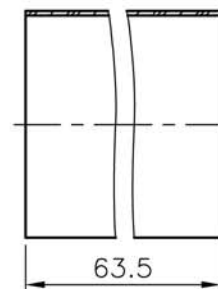
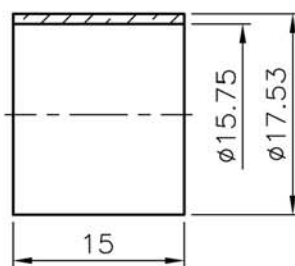
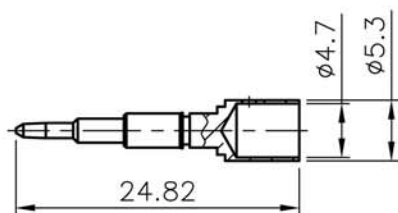
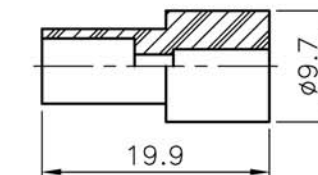
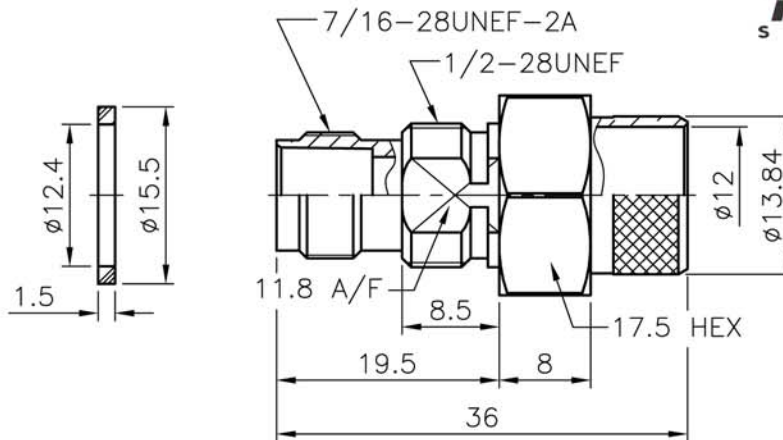
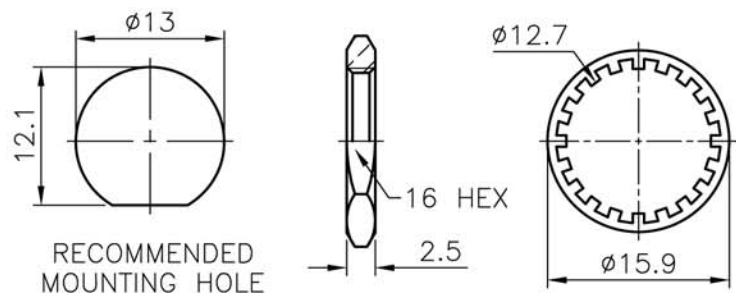


ISS		SYMBOL		REVISIONS	
				DESCRIPTION\DATE	
A1					

REMARK: RoHS COMPLIANT

FOR CUSTOMER



RECOMMENDED CABLE STRIPPING DIM'S

1. CRIMPED FERRULE  
HEX CRIMP SIZE .6" (15.24mm)
2. CONTACT PIN TO SOLDER
3. MAX. PANEL THICKNESS=5mm

- NOTES: FINISH (PLATING THICKNESS IN MICRO-INCHES)
1. BRASS PER QQ-B-626
  2. NICKEL PL 70 MIN THICK OVER COPPER STRIKE
  3. GOLD PL 3 MIN OVER NICKEL PL 70 MIN THICK OVER COPPER STRIKE
  4. TEFLON MIL-P-19468
  5. BRASS JIS H 3250, C 2700

NO.	DESCRIPTION	MATERIAL	FINISH	Q'TY	DRAWING NO.	SCALE	1.5/1	ISSUE	A1			
	HEAT SHRINK TUBE		BLACK									
	NUT	NOTE 1	NOTE 2									
	WASHER	SS41	NOTE 2									
	GASKET	RUBBER	ORANGE									
	FERRULE	NOTE 5	NOTE 2									
	CONTACT PIN	NOTE 1	NOTE 3									
	INSULATOR	NOTE 4	WHITE									
	BODY	NOTE 1	NOTE 2									
						DIMENSIONS ARE IN MILLIMETERS				PART NO.	TerraWave Solutions	
						UNLESS OTHERWISE SPECIFIED TOLERANCES				CON-03-600		
						0.5~6 = ±0.2				APPROVED		DATE
						>6~30 = ±0.4				CHECKED		DATE
						>30~120 = ±0.6				DRAWN		DATE
						>120~315 = ±1				TITLE		
						>315~1000 = ±1.6				RPTNC Bulkhead Jack for TWS-600 Cable		
						ANGLES = ±5°				DRAWING NO.		
										FILE NO.		