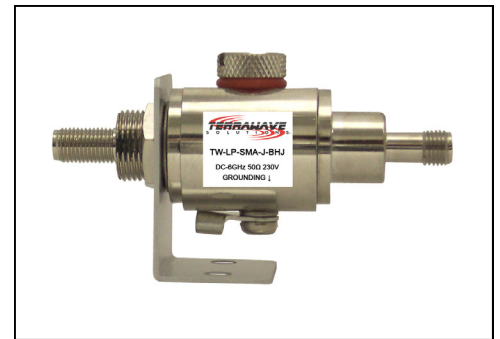


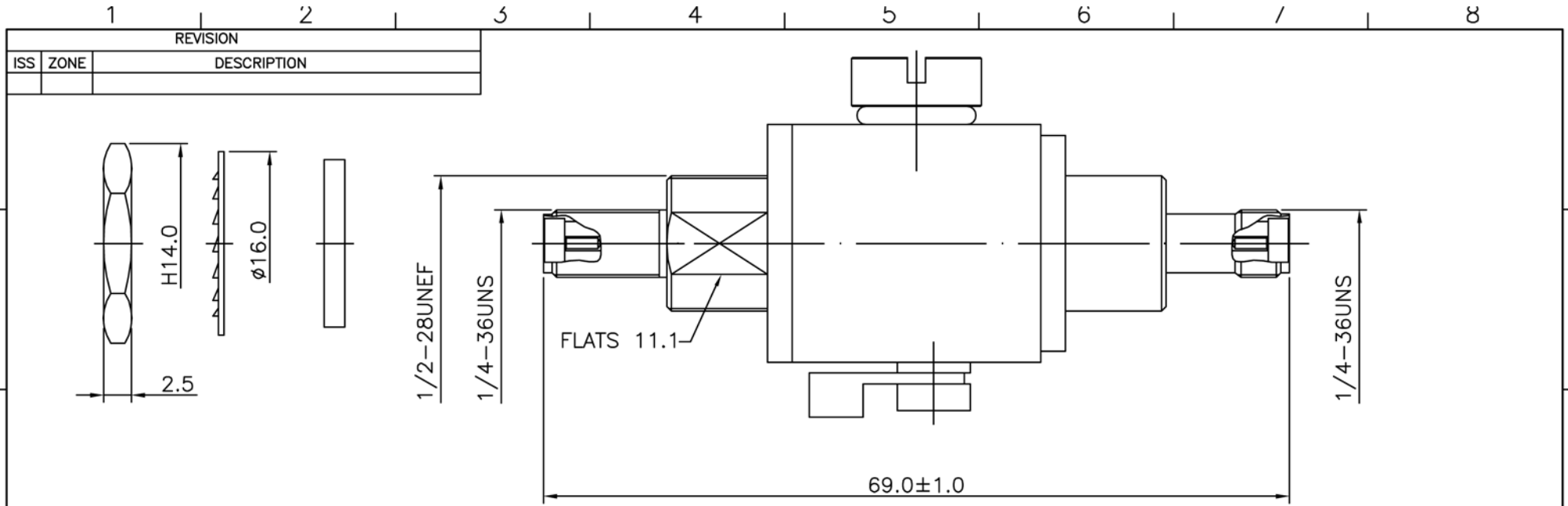


TerraWave Solutions® Lightning Arrestor With SMA Jack To SMA Bulkhead Jack 0-6 GHz

TerraWave's lightning suppressor is a gas discharge tube suppressor and features wide-band operation up to 6 GHz. Simply attach the lightning protector to an access point to help protect an entire network, outdoor antennas and other wireless equipment from the build-up of static electricity. It is recommended to use 18 American Wire Gauge (AWG) ground wire. Every TerraWave lightning arrestor is covered by the Company's one-year warranty program. For questions and to purchase product, contact a regional sales executive at 210-375-8482, 800-851-4965 or sales@terrawave.com. Visit www.terrawave.com for additional information.

Specifications	
Model	TW-LP-SMA-J-BHJ
Frequency Range	DC 0-6 GHz
Insertion Loss	≤0.9 dB
VSWR	DC~6 GHz <1.4
Impedance	50 Ω
Connector	SMA Jack To SMA Bulkhead Jack
Operating Temperature Range	-40°F to 185°F
Dimensions (L x W x H)	2.7" x 0.9" x 1.2"
Insulation Resistance	≥2000 MΩ
DC Discharge Voltage	90 V
Initial Impulse Wave Discharge Voltage	450-500 V (1KV/μs)
Rated Impulse Wave Discharge	20 KA (Wave 8/20 μs) 10 Times (5 Times Each Polarity)
Weight	0.21 lbs
Ground Connection	By Feedthrough or Screw Terminal
Recommended AWG	18 AWG ground wire





18	BODY	BRASS	NICKEL	1	
17	NUT	BRASS	NICKEL	1	
16	WASHER	BRASS	NICKEL	1	
15	WASHER	BRASS	NICKEL	1	
14	INSULATOR B	TEFLON	NONE	1	
13	PIN	BRASS	GOLD	1	
12	BODY	BRASS	NICKEL	1	
11	PIN	BRASS	GOLD	1	
10	GAS TUBE	NONE	NONE	1	
9	O-RING	SILICONE	NICKEL	1	
8	SPRING	STELL	NONE	1	
7	NUT	BRASS	NICKEL	1	
6	GASKET	RUBBER	NONE	2	
5	INSULATOR	TEFLON	NONE	2	
4	BODY	BRASS	NICKEL	1	
3	GASKET	RUBBER	NONE	1	
2	WASHER	BRASS	NICKEL	1	
1	NUT	BRASS	NICKEL	1	

TOLERANCES	
DIMENSIONS ARE IN MILLIMETER	
UNLESS OTHERWISE SPECIFIED	
.X	±0.2
.XX	±0.1
.XXX	±0.05
ANGLES	±5°

TITLE	SMA Jack to SMA Bulkhead Jack Lightning Protector
PART NO.	TW-LP-SMA-J-BHJ
DRAWN NO.	
FILE PATH:	

TerraWave Solutions			
		APPROVED	DATE
		CHECKED	DATE
DRAWN	DATE		

NO.	DESCRIPTION	MATERIAL	FINISH	Q'TY	DRAWN NO.	SCALE	2/1	ISSUE	A-0
1									
2									
3									
4									
5									
6									
7									
8									

