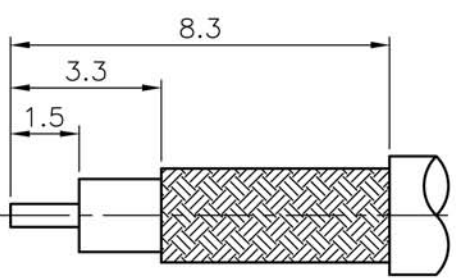


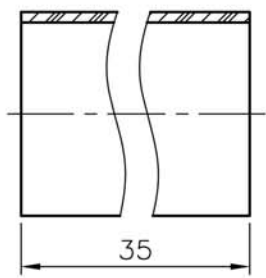
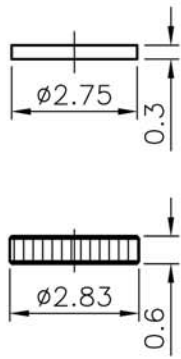
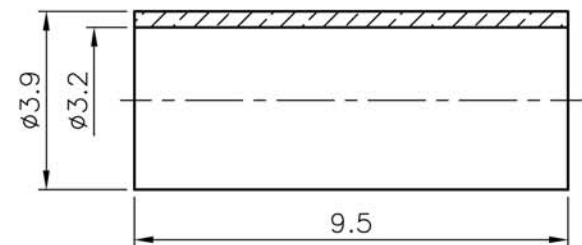
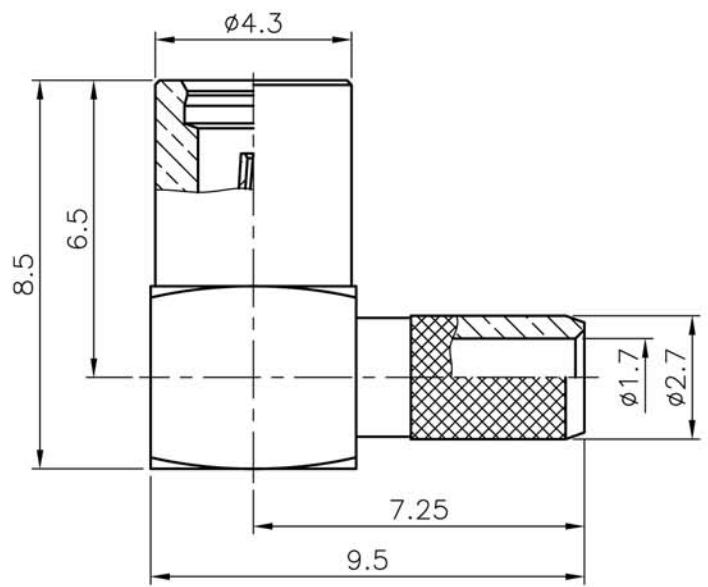
ISS		SYMBOL		REVISIONS	
				DESCRIPTION \ DATE	

REMARK: RoHS COMPLIANT

FOR CUSTOMER



RECOMMENDED CABLE STRIPPING DIM'S



- NOTES: FINISH (PLATING THICKNESS IN MICRO-INCHES)
1. BRASS PER QQ-B-626
  2. GOLD PL 3 MIN OVER NICKEL PL 70 MIN THICK OVER COPPER STRIKE
  3. GOLD PL 30 MIN OVER NICKEL PL 70 MIN THICK OVER COPPER STRIKE
  4. TEFLON MIL-P-19468
  5. BERYLLIUM COPPER PER QQ-C-530
  6. BRASS JIS H 3250, C 2700

1. CRIMPED FERRULE  
HEX CRIMP SIZE .128" (3.25mm)
2. CONTACT PIN TO SOLDER

HEAT SHRINK TUBE					DIMENSIONS ARE IN MILLIMETERS					PART NO.		TerraWave Solutions	
FERRULE					UNLESS OTHERWISE SPECIFIED TOLERANCES					CON-33-100-RA			
COVER					0.5~6 = ±0.2 >6~30 = ±0.4 >30~120 = ±0.6 >120~315 = ±1 >315~1000 = ±1.6 ANGLES = ±5°					APPROVED DATE		DRAWING NO.	
INSULATOR										CHECKED DATE		FILE NO.	
CONTACT PIN										DRAWN DATE			
INSULATOR													
BODY													
NO.	DESCRIPTION	MATERIAL	FINISH	Q'TY	DRAWING NO.	SCALE	6/1	ISSUE	A1				